

**International Society for Krishna Consciousness**

*Founder-Ācārya: A.C. Bhaktivedanta Swami Prabhūpāda*



# Śrī Śrī Rādhā

## Neelamādhava's

WARDROBE COLLECTION



**Vedic Cultural Center**

Sammamish, Washington

**Pujari Working Committee**

2026

# Contents

---

---

<b>Contents</b>	<b>2</b>
<b>Code Reference</b>	<b>3</b>
<b>Occasion Colour Key</b>	<b>5</b>
<b>Night Dresses</b>	<b>6</b>
<b>Weekday Dresses</b>	<b>7</b>
<b>Weekend Dresses</b>	<b>22</b>
<b>Ekadashi Weekday</b>	<b>42</b>
<b>Ekadashi Weekend</b>	<b>45</b>
<b>Crowns</b>	<b>49</b>
<b>Jewellery</b>	<b>60</b>
<b>Ornaments</b>	<b>61</b>
<b>Effulgence</b>	<b>62</b>
<b>Colour Index</b>	<b>63</b>



# Code Reference

---

---

## Dress Codes

Pattern: *DR-OCCASION-NUMBER*

<b>DR-WKD-001</b>	Weekday dress
<b>DR-WKE-001</b>	Weekend dress
<b>DR-NGT-001</b>	Night dress
<b>DR-FST-001</b>	Festival dress
<b>DR-EKW-001</b>	Ekadashi Weekday dress
<b>DR-EKE-001</b>	Ekadashi Weekend dress
<b>DR-ALL-001</b>	Any occasion

---

## Accessory Codes

Pattern: *TYPE-OCCASION-NUMBER*

<b>BG-WKD-001</b>	Backdrop · Weekday · #1
<b>CRN-WKD-001</b>	Crown · Weekday · #1
<b>JWL-001</b>	Jewellery · #1
<b>ORN-001</b>	Ornament · #1
<b>EFL-001</b>	Effulgence · #1

---

---

## Special Codes

<b>TRBN</b>	Turban — made fresh, no fixed code
<b>CRN</b>	Crown — code to be assigned
<b>TRBN / CRN</b>	Turban or Crown — either may be used

---

## Crown Convention by Deity

*Applies to Weekday, Weekend, and their Ekadashi variants.*

DEITY	WEEKDAY / EK. WEEKDAY	WEEKEND / EK. WEEKEND
RNM	CRN (hyperlinked)	TRBN
GN / JBS	CRN (hyperlinked)	TRBN or CRN
LN	—	—
SRLH	CRN (hyperlinked)	CRN (hyperlinked)



# Occasion Colour Key

---

---

**WKD**  
Weekday

**WKE**  
Weekend

**NGT**  
Night

**FST**  
Festival

**EKW**  
Ekadashi Weekday

**EKE**  
Ekadashi Weekend

**ALL**  
Any occasion



# Night Dresses

*Elegant attire for the evening darshan*

DR-NGT-001 through DR-NGT-000

---

*Compile twice to generate the index.*



# Weekday Dresses

*Graceful attire for daily service*

DR-WKD-001 through DR-WKD-014

---

## BROWSE BY RANGE

001-010

001

002

003

004

005

006

007

008

009

010

011-014

011

012

013

014



## Vasanta Utsava

COLOUR **Magenta & Gold Floral**



DEITY	CROWN / TURBAN	EFFULGENCE	JEWELLERY
Radha Neela Madhava <small>RNM</small>	<b>CRN-WKD-001</b>	—	—
Gaur Nitai <small>GN</small>	<b>CRN-WKD-001</b>	—	—
Jagannath Baldeva Subhadra <small>JBS</small>	<b>CRN-WKD-001</b>	—	—
Laxmi Narsimha <small>LN</small>	—	—	—
Sita Rama Laxmana Hanumana <small>SRLH</small>	<b>CRN-WKD-001</b>	—	—

**BACKDROP**

**BG-WKD-001**



# Madhura Ranga

COLOUR Purple & Orange Zari



DEITY	CROWN / TURBAN	EFFULGENCE	JEWELLERY
Radha Neela Madhava <small>RNM</small>	<a href="#">CRN-WKD-002</a>	—	—
Gaur Nitai <small>GN</small>	<a href="#">CRN-WKD-002</a>	—	—
Jagannath Baldeva Subhadra <small>JBS</small>	<a href="#">CRN-WKD-002</a>	—	—
Laxmi Narsimha <small>LN</small>	—	—	—
Sita Rama Laxmana Hanumana <small>SRLH</small>	<a href="#">CRN-WKD-002</a>	—	—

BACKDROP

[BG-WKD-002](#)



## Hemanta Shobha

COLOUR **Crimson & Gold Brocade**



DEITY	CROWN / TURBAN	EFFULGENCE	JEWELLERY
Radha Neela Madhava <small>RNM</small>	<b>CRN-WKD-003</b>	—	—
Gaur Nitai <small>GN</small>	<b>CRN-WKD-003</b>	—	—
Jagannath Baldeva Subhadra <small>JBS</small>	<b>CRN-WKD-003</b>	—	—
Laxmi Narsimha <small>LN</small>	—	—	—
Sita Rama Laxmana Hanumana <small>SRLH</small>	<b>CRN-WKD-003</b>	—	—

BACKDROP

**BG-WKD-003**



## Vana Vihara

COLOUR **Rose & Lime Silk**



DEITY	CROWN / TURBAN	EFFULGENCE	JEWELLERY
Radha Neela Madhava <small>RNM</small>	<b>CRN-WKD-004</b>	—	—
Gaur Nitai <small>GN</small>	<b>CRN-WKD-004</b>	—	—
Jagannath Baldeva Subhadra <small>JBS</small>	<b>CRN-WKD-004</b>	—	—
Laxmi Narsimha <small>LN</small>	—	—	—
Sita Rama Laxmana Hanumana <small>SRLH</small>	<b>CRN-WKD-004</b>	—	—

BACKDROP

**BG-WKD-004**



## Nila Kamala

COLOUR **Purple & Saffron**



DEITY	CROWN / TURBAN	EFFULGENCE	JEWELLERY
Radha Neela Madhava <small>RNM</small>	<b>CRN-WKD-005</b>	—	—
Gaur Nitai <small>GN</small>	<b>CRN-WKD-005</b>	—	—
Jagannath Baldeva Subhadra <small>JBS</small>	<b>CRN-WKD-005</b>	—	—
Laxmi Narsimha <small>LN</small>	—	—	—
Sita Rama Laxmana Hanumana <small>SRLH</small>	<b>CRN-WKD-005</b>	—	—

BACKDROP

**BG-WKD-005**



# Sharad Purnima

COLOUR Peach & Copper Zari



DEITY	CROWN / TURBAN	EFFULGENCE	JEWELLERY
Radha Neela Madhava <small>RNM</small>	<a href="#">CRN-WKD-006</a>	—	—
Gaur Nitai <small>GN</small>	<a href="#">CRN-WKD-006</a>	—	—
Jagannath Baldeva Subhadra <small>JBS</small>	<a href="#">CRN-WKD-006</a>	—	—
Laxmi Narsimha <small>LN</small>	—	—	—
Sita Rama Laxmana Hanumana <small>SRLH</small>	<a href="#">CRN-WKD-006</a>	—	—

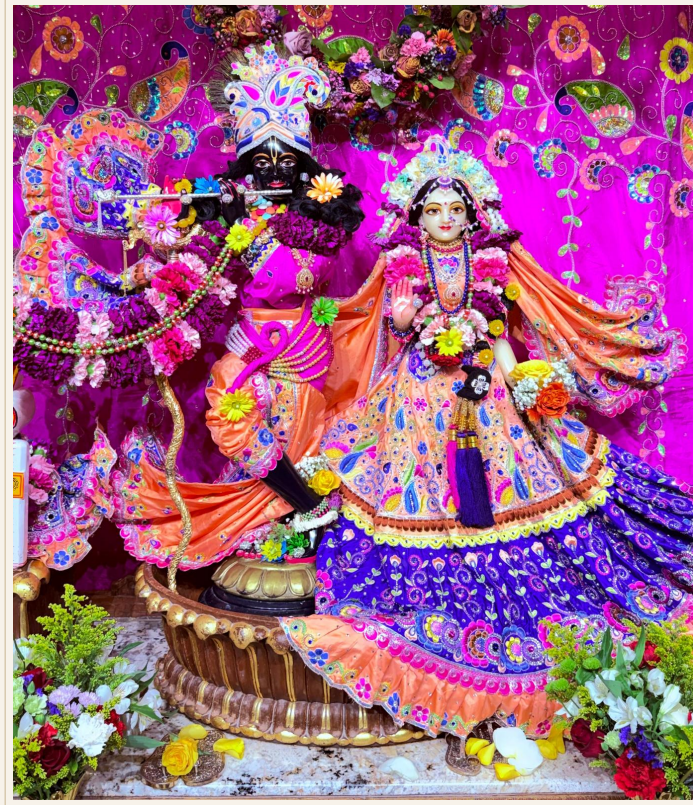
BACKDROP

[BG-WKD-006](#)



# Kadamba Pushpa

COLOUR **Magenta & Ivory**



DEITY	CROWN / TURBAN	EFFULGENCE	JEWELLERY
Radha Neela Madhava <small>RNM</small>	<b>CRN-WKD-007</b>	—	—
Gaur Nitai <small>GN</small>	<b>CRN-WKD-007</b>	—	—
Jagannath Baldeva Subhadra <small>JBS</small>	<b>CRN-WKD-007</b>	—	—
Laxmi Narsimha <small>LN</small>	—	—	—
Sita Rama Laxmana Hanumana <small>SRLH</small>	<b>CRN-WKD-007</b>	—	—

BACKDROP

**BG-WKD-007**



# Shyama Sundara

COLOUR **Royal Blue & Green**



DEITY	CROWN / TURBAN	EFFULGENCE	JEWELLERY
Radha Neela Madhava <small>RNM</small>	<b>CRN-WKD-008</b>	—	—
Gaur Nitai <small>GN</small>	<b>CRN-WKD-008</b>	—	—
Jagannath Baldeva Subhadra <small>JBS</small>	<b>CRN-WKD-008</b>	—	—
Laxmi Narsimha <small>LN</small>	—	—	—
Sita Rama Laxmana Hanumana <small>SRLH</small>	<b>CRN-WKD-008</b>	—	—

BACKDROP

**BG-WKD-008**



## Vrindavana Vilasa

COLOUR **Teal & Yellow Silk**



DEITY	CROWN / TURBAN	EFFULGENCE	JEWELLERY
Radha Neela Madhava <small>RNM</small>	<b>CRN-WKD-009</b>	—	—
Gaur Nitai <small>GN</small>	<b>CRN-WKD-009</b>	—	—
Jagannath Baldeva Subhadra <small>JBS</small>	<b>CRN-WKD-009</b>	—	—
Laxmi Narsimha <small>LN</small>	—	—	—
Sita Rama Laxmana Hanumana <small>SRLH</small>	<b>CRN-WKD-009</b>	—	—

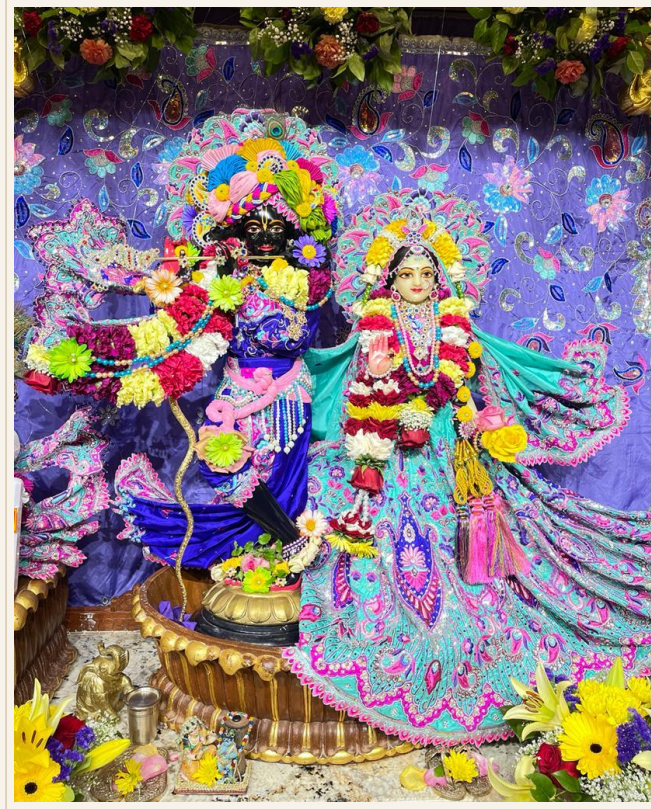
BACKDROP

**BG-WKD-009**



# Navadwipa Priya

COLOUR **Indigo & Mint Floral**



DEITY	CROWN / TURBAN	EFFULGENCE	JEWELLERY
Radha Neela Madhava <small>RNM</small>	CRN	—	—
Gaur Nitai <small>GN</small>	CRN	—	—
Jagannath Baldeva Subhadra <small>JBS</small>	CRN	—	—
Laxmi Narsimha <small>LN</small>	—	—	—
Sita Rama Laxmana Hanumana <small>SRLH</small>	CRN	—	—

BACKDROP

BG-WKD-010



## Gokula Ananda

COLOUR **Salmon & Green Brocade**



DEITY	CROWN / TURBAN	EFFULGENCE	JEWELLERY
Radha Neela Madhava <small>RNM</small>	<b>CRN</b>	—	—
Gaur Nitai <small>GN</small>	<b>CRN</b>	—	—
Jagannath Baldeva Subhadra <small>JBS</small>	<b>CRN</b>	—	—
Laxmi Narsimha <small>LN</small>	—	—	—
Sita Rama Laxmana Hanumana <small>SRLH</small>	<b>CRN</b>	—	—

BACKDROP

BG-WKD-011



## Tamal Taru

COLOUR **Red & White Chikankari**



DEITY	CROWN / TURBAN	EFFULGENCE	JEWELLERY
Radha Neela Madhava <small>RNM</small>	<b>CRN</b>	—	—
Gaur Nitai <small>GN</small>	<b>CRN</b>	—	—
Jagannath Baldeva Subhadra <small>JBS</small>	<b>CRN</b>	—	—
Laxmi Narsimha <small>LN</small>	—	—	—
Sita Rama Laxmana Hanumana <small>SRLH</small>	<b>CRN</b>	—	—

BACKDROP

BG-WKD-012



## Yamuna Tira

COLOUR **Indigo & Multicolour**



DEITY	CROWN / TURBAN	EFFULGENCE	JEWELLERY
Radha Neela Madhava <small>RNM</small>	<b>CRN</b>	—	—
Gaur Nitai <small>GN</small>	<b>CRN</b>	—	—
Jagannath Baldeva Subhadra <small>JBS</small>	<b>CRN</b>	—	—
Laxmi Narsimha <small>LN</small>	—	—	—
Sita Rama Laxmana Hanumana <small>SRLH</small>	<b>CRN</b>	—	—

BACKDROP

BG-WKD-013



## Kadamba Vana

COLOUR Yellow & Purple Brocade



DEITY	CROWN / TURBAN	EFFULGENCE	JEWELLERY
Radha Neela Madhava <small>RNM</small>	CRN	—	—
Gaur Nitai <small>GN</small>	CRN	—	—
Jagannath Baldeva Subhadra <small>JBS</small>	CRN	—	—
Laxmi Narsimha <small>LN</small>	—	—	—
Sita Rama Laxmana Hanumana <small>SRLH</small>	CRN	—	—

BACKDROP

BG-WKD-014



# Weekend Dresses

*Festive splendour for special days*

DR-WKE-001 through DR-WKE-019

---

## BROWSE BY RANGE

001-010

001

002

003

004

005

006

007

008

009

010

011-019

011

012

013

014

015

016

017

018

019



# Keshava Priya

COLOUR **Fuchsia & Gold**



DEITY	CROWN / TURBAN	EFFULGENCE	JEWELLERY
Radha Neela Madhava <small>RNM</small>	TRBN	—	—
Gaur Nitai <small>GN</small>	TRBN / CRN	—	—
Jagannath Baldeva Subhadra <small>JBS</small>	TRBN / CRN	—	—
Laxmi Narsimha <small>LN</small>	—	—	—
Sita Rama Laxmana Hanumana <small>SRLH</small>	CRN	—	—

BACKDROP

BG-WKE-001



## Surya Prakasha

COLOUR Orange & Black Zari



DEITY	CROWN / TURBAN	EFFULGENCE	JEWELLERY
Radha Neela Madhava <small>RNM</small>	TRBN	—	—
Gaur Nitai <small>GN</small>	TRBN / CRN	—	—
Jagannath Baldeva Subhadra <small>JBS</small>	TRBN / CRN	—	—
Laxmi Narsimha <small>LN</small>	—	—	—
Sita Rama Laxmana Hanumana <small>SRLH</small>	CRN	—	—

BACKDROP

BG-WKE-002



## Mayura Nritya

COLOUR **Black & Multicolour Floral**



DEITY	CROWN / TURBAN	EFFULGENCE	JEWELLERY
Radha Neela Madhava <small>RNM</small>	TRBN	—	—
Gaur Nitai <small>GN</small>	TRBN / CRN	—	—
Jagannath Baldeva Subhadra <small>JBS</small>	TRBN / CRN	—	—
Laxmi Narsimha <small>LN</small>	—	—	—
Sita Rama Laxmana Hanumana <small>SRLH</small>	CRN	—	—

BACKDROP

BG-WKE-003



## Kusum Mala

COLOUR **Pink & Green Garden**



DEITY	CROWN / TURBAN	EFFULGENCE	JEWELLERY
Radha Neela Madhava <small>RNM</small>	TRBN	—	—
Gaur Nitai <small>GN</small>	TRBN / CRN	—	—
Jagannath Baldeva Subhadra <small>JBS</small>	TRBN / CRN	—	—
Laxmi Narsimha <small>LN</small>	—	—	—
Sita Rama Laxmana Hanumana <small>SRLH</small>	CRN	—	—

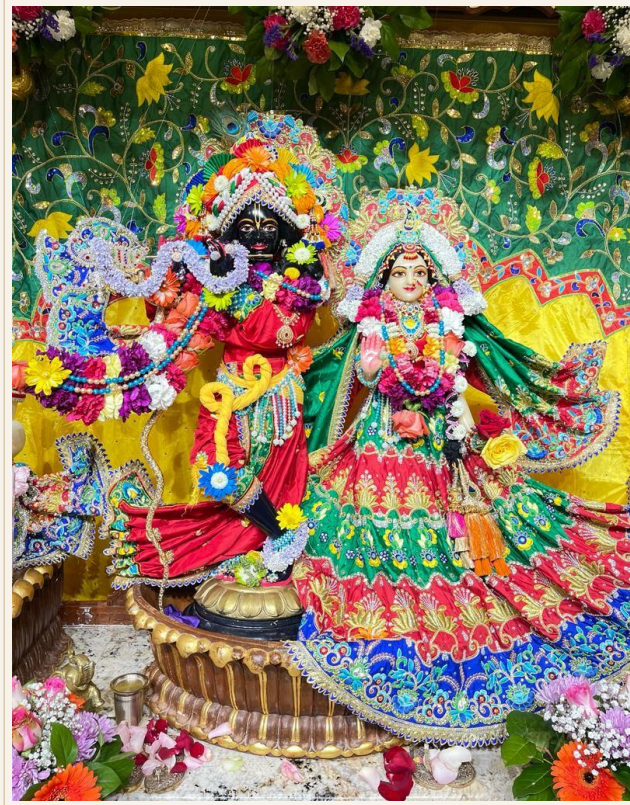
BACKDROP

BG-WKE-004



## Harita Vana

COLOUR **Green & Multicolour Forest**



DEITY	CROWN / TURBAN	EFFULGENCE	JEWELLERY
Radha Neela Madhava <small>RNM</small>	TRBN	—	—
Gaur Nitai <small>GN</small>	TRBN / CRN	—	—
Jagannath Baldeva Subhadra <small>JBS</small>	TRBN / CRN	—	—
Laxmi Narsimha <small>LN</small>	—	—	—
Sita Rama Laxmana Hanumana <small>SRLH</small>	CRN	—	—

BACKDROP

BG-WKE-005



# Nilambara

COLOUR **Royal Blue & Gold Zari**



DEITY	CROWN / TURBAN	EFFULGENCE	JEWELLERY
Radha Neela Madhava <small>RNM</small>	TRBN	—	—
Gaur Nitai <small>GN</small>	TRBN / CRN	—	—
Jagannath Baldeva Subhadra <small>JBS</small>	TRBN / CRN	—	—
Laxmi Narsimha <small>LN</small>	—	—	—
Sita Rama Laxmana Hanumana <small>SRLH</small>	CRN	—	—

BACKDROP

BG-WKE-006



# Maha Lakshmi

COLOUR **Crimson & Gold Heavy**



DEITY	CROWN / TURBAN	EFFULGENCE	JEWELLERY
Radha Neela Madhava <small>RNM</small>	TRBN	—	—
Gaur Nitai <small>GN</small>	TRBN / CRN	—	—
Jagannath Baldeva Subhadra <small>JBS</small>	TRBN / CRN	—	—
Laxmi Narsimha <small>LN</small>	—	—	—
Sita Rama Laxmana Hanumana <small>SRLH</small>	CRN	—	—

BACKDROP

BG-WKE-007



# Pushpa Vrishti

COLOUR **Blue & Orange** Festive



DEITY	CROWN / TURBAN	EFFULGENCE	JEWELLERY
Radha Neela Madhava <small>RNM</small>	TRBN	—	—
Gaur Nitai <small>GN</small>	TRBN / CRN	—	—
Jagannath Baldeva Subhadra <small>JBS</small>	TRBN / CRN	—	—
Laxmi Narsimha <small>LN</small>	—	—	—
Sita Rama Laxmana Hanumana <small>SRLH</small>	CRN	—	—

BACKDROP

BG-WKE-008



## Kalindi Priya

COLOUR **Blue & Multicolour Silk**



DEITY	CROWN / TURBAN	EFFULGENCE	JEWELLERY
Radha Neela Madhava <small>RNM</small>	TRBN	—	—
Gaur Nitai <small>GN</small>	TRBN / CRN	—	—
Jagannath Baldeva Subhadra <small>JBS</small>	TRBN / CRN	—	—
Laxmi Narsimha <small>LN</small>	—	—	—
Sita Rama Laxmana Hanumana <small>SRLH</small>	CRN	—	—

BACKDROP

BG-WKE-009



## Padmavati

COLOUR Purple & Fuchsia Festival



DEITY	CROWN / TURBAN	EFFULGENCE	JEWELLERY
Radha Neela Madhava <small>RNM</small>	TRBN	—	—
Gaur Nitai <small>GN</small>	TRBN / CRN	—	—
Jagannath Baldeva Subhadra <small>JBS</small>	TRBN / CRN	—	—
Laxmi Narsimha <small>LN</small>	—	—	—
Sita Rama Laxmana Hanumana <small>SRLH</small>	CRN	—	—

BACKDROP

BG-WKE-010



## Tulasi Devi

COLOUR **Teal & Gold Brocade**



DEITY	CROWN / TURBAN	EFFULGENCE	JEWELLERY
Radha Neela Madhava <small>RNM</small>	TRBN	—	—
Gaur Nitai <small>GN</small>	TRBN / CRN	—	—
Jagannath Baldeva Subhadra <small>JBS</small>	TRBN / CRN	—	—
Laxmi Narsimha <small>LN</small>	—	—	—
Sita Rama Laxmana Hanumana <small>SRLH</small>	CRN	—	—

BACKDROP

BG-WKE-011



## Vrindavana Dasi

COLOUR **Crimson & Ivory Embroidery**



DEITY	CROWN / TURBAN	EFFULGENCE	JEWELLERY
Radha Neela Madhava <small>RNM</small>	TRBN	—	—
Gaur Nitai <small>GN</small>	TRBN / CRN	—	—
Jagannath Baldeva Subhadra <small>JBS</small>	TRBN / CRN	—	—
Laxmi Narsimha <small>LN</small>	—	—	—
Sita Rama Laxmana Hanumana <small>SRLH</small>	CRN	—	—

BACKDROP

BG-WKE-012



## Radha Priya

COLOUR **Blue & Fuchsia Silk**



DEITY	CROWN / TURBAN	EFFULGENCE	JEWELLERY
Radha Neela Madhava <small>RNM</small>	TRBN	—	—
Gaur Nitai <small>GN</small>	TRBN / CRN	—	—
Jagannath Baldeva Subhadra <small>JBS</small>	TRBN / CRN	—	—
Laxmi Narsimha <small>LN</small>	—	—	—
Sita Rama Laxmana Hanumana <small>SRLH</small>	CRN	—	—

BACKDROP

BG-WKE-013



## Nava Yuva

COLOUR **Blue & Yellow Peacock**



DEITY	CROWN / TURBAN	EFFULGENCE	JEWELLERY
Radha Neela Madhava <small>RNM</small>	TRBN	—	—
Gaur Nitai <small>GN</small>	TRBN / CRN	—	—
Jagannath Baldeva Subhadra <small>JBS</small>	TRBN / CRN	—	—
Laxmi Narsimha <small>LN</small>	—	—	—
Sita Rama Laxmana Hanumana <small>SRLH</small>	CRN	—	—

BACKDROP

BG-WKE-014



# Hemangini

COLOUR **Magenta & Gold Heavy**



DEITY	CROWN / TURBAN	EFFULGENCE	JEWELLERY
Radha Neela Madhava <small>RNM</small>	TRBN	—	—
Gaur Nitai <small>GN</small>	TRBN / CRN	—	—
Jagannath Baldeva Subhadra <small>JBS</small>	TRBN / CRN	—	—
Laxmi Narsimha <small>LN</small>	—	—	—
Sita Rama Laxmana Hanumana <small>SRLH</small>	CRN	—	—

BACKDROP

BG-WKE-015



## Syamala

COLOUR **Blue & Multicolour Spring**



DEITY	CROWN / TURBAN	EFFULGENCE	JEWELLERY
Radha Neela Madhava <small>RNM</small>	TRBN	—	—
Gaur Nitai <small>GN</small>	TRBN / CRN	—	—
Jagannath Baldeva Subhadra <small>JBS</small>	TRBN / CRN	—	—
Laxmi Narsimha <small>LN</small>	—	—	—
Sita Rama Laxmana Hanumana <small>SRLH</small>	CRN	—	—

BACKDROP

BG-WKE-016



# Krsna Priya

COLOUR **Magenta & Green Zari**



DEITY	CROWN / TURBAN	EFFULGENCE	JEWELLERY
Radha Neela Madhava <small>RNM</small>	TRBN	—	—
Gaur Nitai <small>GN</small>	TRBN / CRN	—	—
Jagannath Baldeva Subhadra <small>JBS</small>	TRBN / CRN	—	—
Laxmi Narsimha <small>LN</small>	—	—	—
Sita Rama Laxmana Hanumana <small>SRLH</small>	CRN	—	—

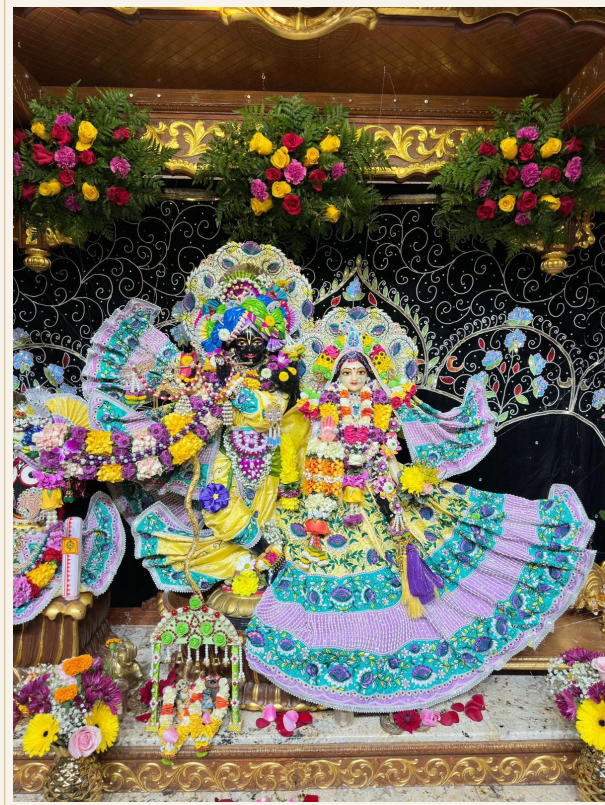
BACKDROP

BG-WKE-017



## Lalita Sakhi

COLOUR **Teal & Multicolour Festive**



DEITY	CROWN / TURBAN	EFFULGENCE	JEWELLERY
Radha Neela Madhava <small>RNM</small>	TRBN	—	—
Gaur Nitai <small>GN</small>	TRBN / CRN	—	—
Jagannath Baldeva Subhadra <small>JBS</small>	TRBN / CRN	—	—
Laxmi Narsimha <small>LN</small>	—	—	—
Sita Rama Laxmana Hanumana <small>SRLH</small>	CRN	—	—

BACKDROP

BG-WKE-018



## Visakha Devi

COLOUR **Black & Gold Embroidery**



DEITY	CROWN / TURBAN	EFFULGENCE	JEWELLERY
Radha Neela Madhava <small>RNM</small>	TRBN	—	—
Gaur Nitai <small>GN</small>	TRBN / CRN	—	—
Jagannath Baldeva Subhadra <small>JBS</small>	TRBN / CRN	—	—
Laxmi Narsimha <small>LN</small>	—	—	—
Sita Rama Laxmana Hanumana <small>SRLH</small>	CRN	—	—

BACKDROP

BG-WKE-019



# Ekadashi Weekday

*Pure and auspicious for Ekadashi*

DR-EKW-001 through DR-EKW-002

---

BROWSE BY RANGE

001-002

001

002



# Shuddha Vasana

COLOUR **White & Pink Chikankari**



DEITY	CROWN / TURBAN	EFFULGENCE	JEWELLERY
Radha Neela Madhava <small>RNM</small>	CRN	—	—
Gaur Nitai <small>GN</small>	CRN	—	—
Jagannath Baldeva Subhadra <small>JBS</small>	CRN	—	—
Laxmi Narsimha <small>LN</small>	—	—	—
Sita Rama Laxmana Hanumana <small>SRLH</small>	CRN	—	—

BACKDROP

BG-EKW-001



## Ekadashi Pushpa

COLOUR **White & Red Bridal**



DEITY	CROWN / TURBAN	EFFULGENCE	JEWELLERY
Radha Neela Madhava <small>RNM</small>	<b>CRN-EKW-002</b>	—	—
Gaur Nitai <small>GN</small>	<b>CRN-EKW-002</b>	—	—
Jagannath Baldeva Subhadra <small>JBS</small>	<b>CRN-EKW-002</b>	—	—
Laxmi Narsimha <small>LN</small>	—	—	—
Sita Rama Laxmana Hanumana <small>SRLH</small>	<b>CRN-EKW-002</b>	—	—

BACKDROP

**BG-EKW-002**



# Ekadashi Weekend

*Elevated simplicity for sacred days*

DR-EKE-001 through DR-EKE-003

---

BROWSE BY RANGE

001-003

001

002

003



# Pavitra Mala

COLOUR **Pink & Teal Silk**



DEITY	CROWN / TURBAN	EFFULGENCE	JEWELLERY
Radha Neela Madhava <small>RNM</small>	<b>TRBN</b>	—	—
Gaur Nitai <small>GN</small>	<b>TRBN / CRN</b>	—	—
Jagannath Baldeva Subhadra <small>JBS</small>	<b>TRBN / CRN</b>	—	—
Laxmi Narsimha <small>LN</small>	—	—	—
Sita Rama Laxmana Hanumana <small>SRLH</small>	<b>CRN</b>	—	—

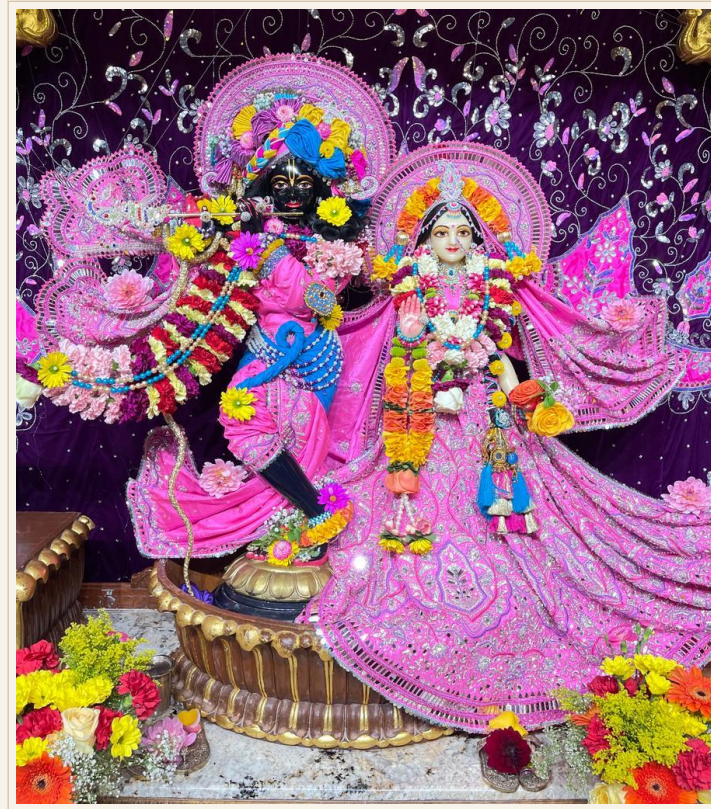
BACKDROP

BG-EKE-001



# Vrata Shobha

COLOUR **Fuchsia & Purple Brocade**



DEITY	CROWN / TURBAN	EFFULGENCE	JEWELLERY
Radha Neela Madhava <small>RNM</small>	<b>TRBN</b>	—	—
Gaur Nitai <small>GN</small>	<b>TRBN / CRN</b>	—	—
Jagannath Baldeva Subhadra <small>JBS</small>	<b>TRBN / CRN</b>	—	—
Laxmi Narsimha <small>LN</small>	—	—	—
Sita Rama Laxmana Hanumana <small>SRLH</small>	<b>CRN</b>	—	—

BACKDROP

BG-EKE-002



# Nishkalanka

COLOUR **Crimson & Pink Festive**



DEITY	CROWN / TURBAN	EFFULGENCE	JEWELLERY
Radha Neela Madhava <small>RNM</small>	<b>TRBN</b>	—	—
Gaur Nitai <small>GN</small>	<b>TRBN / CRN</b>	—	—
Jagannath Baldeva Subhadra <small>JBS</small>	<b>TRBN / CRN</b>	—	—
Laxmi Narsimha <small>LN</small>	—	—	—
Sita Rama Laxmana Hanumana <small>SRLH</small>	<b>CRN</b>	—	—

BACKDROP

BG-EKE-003



# Crowns

*Sacred crowns for the Deities*

---



CRN-WKD-001





CRN-WKD-002





CRN-WKD-003





CRN-WKD-004





CRN-WKD-005





CRN-WKD-006





CRN-WKD-007





CRN-WKD-008





CRN-WKD-009





CRN-EKW-002





# Jewellery

*Sacred jewellery for the Deities*

---



# Ornaments

*Sacred ornaments for the Deities*

---



# Effulgence

*Sacred effulgence for the Deities*

---

## Colour Index

---

Browse by colour name. Tap any code to jump to that dress page.

---

### Black

WEEKEND [DR-WKE-004](#) [DR-WKE-007](#) [DR-WKE-024](#)

---

### Blue

WEEKDAY [DR-WKD-008](#)  
WEEKEND [DR-WKE-001](#) [DR-WKE-006](#) [DR-WKE-010](#) [DR-WKE-013](#)  
[DR-WKE-014](#) [DR-WKE-018](#) [DR-WKE-019](#) [DR-WKE-021](#)

---

### Copper

WEEKDAY [DR-WKD-006](#)

---

### Crimson

WEEKDAY [DR-WKD-003](#)  
WEEKEND [DR-WKE-012](#) [DR-WKE-017](#)  
EK. WEEKEND [DR-EKE-003](#)

---

### Fuchsia

WEEKEND [DR-WKE-002](#) [DR-WKE-015](#) [DR-WKE-018](#)  
EK. WEEKEND [DR-EKE-002](#)

---

### Gold

WEEKDAY [DR-WKD-001](#) [DR-WKD-003](#)  
WEEKEND [DR-WKE-002](#) [DR-WKE-010](#) [DR-WKE-012](#) [DR-WKE-016](#)  
[DR-WKE-020](#) [DR-WKE-024](#)

---

### Green

WEEKDAY [DR-WKD-004](#) [DR-WKD-008](#)  
WEEKEND [DR-WKE-001](#) [DR-WKE-003](#) [DR-WKE-008](#) [DR-WKE-009](#)  
[DR-WKE-022](#)

---

### Ivory

WEEKDAY [DR-WKD-007](#)  
WEEKEND [DR-WKE-017](#)

---

*Magenta*

WEEKDAY **DR-WKD-001** **DR-WKD-007**  
WEEKEND **DR-WKE-020** **DR-WKE-022**

---

*Multicolour*

WEEKEND **DR-WKE-006** **DR-WKE-007** **DR-WKE-009** **DR-WKE-014**  
**DR-WKE-021** **DR-WKE-023**

---

*Orange*

WEEKDAY **DR-WKD-002** **DR-WKD-005**  
WEEKEND **DR-WKE-004** **DR-WKE-013**

---

*Peach*

WEEKDAY **DR-WKD-006**

---

*Pink*

WEEKDAY **DR-WKD-004**  
WEEKEND **DR-WKE-003** **DR-WKE-008**  
EK. WEEKDAY **DR-EKW-001**  
EK. WEEKEND **DR-EKE-001** **DR-EKE-003**

---

*Purple*

WEEKDAY **DR-WKD-002** **DR-WKD-005**  
WEEKEND **DR-WKE-011** **DR-WKE-015**  
EK. WEEKEND **DR-EKE-002**

---

*Red*

WEEKEND **DR-WKE-005**  
EK. WEEKDAY **DR-EKW-002**

---

*Teal*

WEEKDAY **DR-WKD-009**  
WEEKEND **DR-WKE-016** **DR-WKE-023**  
EK. WEEKEND **DR-EKE-001**

---

*White*

WEEKEND **DR-WKE-005**  
EK. WEEKDAY **DR-EKW-001** **DR-EKW-002**

---

*Yellow*

WEEKDAY DR-WKD-009

WEEKEND DR-WKE-011 DR-WKE-019

---

# How to Use This Catalog

---

---

<b>Categories</b>	Each section opens with a warm parchment divider page.
<b>Range Index</b>	Tap any number tile on the divider to jump directly to that dress.
<b>Dress Code</b>	Coloured badge at top-right of every page. The colour shows the occasion.
<b>Ornament Table</b>	Below each photo: shows Crown/Turban, Effulgence and Jewellery codes per deity.
<b>Backdrop</b>	The accessory panel at the bottom shows the backdrop cloth code.
<b>Colour Index</b>	Find dresses by individual colour at the back. Each dress appears under every colour it contains.
<b>Code System</b>	See the Code Reference page for the full pattern guide.



All codes are for internal reference only.