

International Society for Krishna Consciousness

Founder-Ācārya: His Divine Grace A.C. Bhaktivedanta Swami Prabhūpāda

**Śrī Śrī Rādhā
Nīlamādhava's**

Wardrobe Collection

**Vedic Cultural Center
Sammamish**

Pujari Working Committee

2025

Contents

Night Dresses	6
Weekday Dresses	7
Weekend Dresses	17
Ekadashi Weekday	42
Ekadashi Weekend	45
Colour Index	49

Code Reference

Dress Codes

Pattern: *DR-OCCASION-NUMBER*

DR-WKD-001	Weekday dress
DR-WKE-001	Weekend dress
DR-NGT-001	Night dress
DR-FST-001	Festival dress
DR-EKW-001	Ekadashi Weekday dress
DR-EKE-001	Ekadashi Weekend dress
DR-ALL-001	Any occasion

Accessory Codes

Pattern: *TYPE-OCCASION-NUMBER*

BG-WKD-03	Background · Weekday · #3
CR-NGT-01	Crown / Turban · Night · #1
OR-FST-02	Ornament · Festival · #2
JW-ALL-04	Jewellery · Any occasion · #4

Special Codes

TRBN

Turban — made fresh, no fixed code

Occasion Colour Key

WKD
Weekday

WKE
Weekend

NGT
Night

FST
Festival

EKW
Ekadashi Weekday

EKE
Ekadashi Weekend

ALL
Any occasion

Night Dresses

Elegant attire for the evening darshan

DR-NGT-001 through DR-NGT-000

Compile twice to generate the index.

Weekday Dresses

Graceful attire for daily service

DR-WKD-001 through DR-WKD-009

BROWSE BY RANGE

001-009

001

002

003

004

005

006

007

008

009



Vasanta Utsava

COLOUR **Magenta & Gold Floral**



DEITY	CROWN / TURBAN	EFFULGENCE	JEWELLERY
Radha Neela Madhava <small>RNM</small>	—	—	—
Gaur Nitai <small>GN</small>	—	—	—
Jagannath Baldeva Subhadra <small>JBS</small>	—	—	—
Laxmi Narsimha <small>LN</small>	—	—	—
Sita Rama Laxmana Hanumana <small>SRLH</small>	—	—	—

BACKGROUND

BG-WKD-001



Madhura Ranga

COLOUR Purple & Orange Zari



DEITY	CROWN / TURBAN	EFFULGENCE	JEWELLERY
Radha Neela Madhava <small>RNM</small>	—	—	—
Gaur Nitai <small>GN</small>	—	—	—
Jagannath Baldeva Subhadra <small>JBS</small>	—	—	—
Laxmi Narsimha <small>LN</small>	—	—	—
Sita Rama Laxmana Hanumana <small>SRLH</small>	—	—	—

BACKGROUND

BG-WKD-002



Hemanta Shobha

COLOUR **Crimson & Gold Brocade**



DEITY	CROWN / TURBAN	EFFULGENCE	JEWELLERY
Radha Neela Madhava <small>RNM</small>	—	—	—
Gaur Nitai <small>GN</small>	—	—	—
Jagannath Baldeva Subhadra <small>JBS</small>	—	—	—
Laxmi Narsimha <small>LN</small>	—	—	—
Sita Rama Laxmana Hanumana <small>SRLH</small>	—	—	—

BACKGROUND

BG-WKD-003



Vana Vihara

COLOUR **Rose & Lime Silk**



DEITY	CROWN / TURBAN	EFFULGENCE	JEWELLERY
Radha Neela Madhava <small>RNM</small>	—	—	—
Gaur Nitai <small>GN</small>	—	—	—
Jagannath Baldeva Subhadra <small>JBS</small>	—	—	—
Laxmi Narsimha <small>LN</small>	—	—	—
Sita Rama Laxmana Hanumana <small>SRLH</small>	—	—	—

BACKGROUND

BG-WKD-004



Nila Kamala

COLOUR **Purple & Saffron**



DEITY	CROWN / TURBAN	EFFULGENCE	JEWELLERY
Radha Neela Madhava <small>RNM</small>	—	—	—
Gaur Nitai <small>GN</small>	—	—	—
Jagannath Baldeva Subhadra <small>JBS</small>	—	—	—
Laxmi Narsimha <small>LN</small>	—	—	—
Sita Rama Laxmana Hanumana <small>SRLH</small>	—	—	—

BACKGROUND

BG-WKD-005



Sharad Purnima

COLOUR Peach & Copper Zari



DEITY	CROWN / TURBAN	EFFULGENCE	JEWELLERY
Radha Neela Madhava <small>RNM</small>	—	—	—
Gaur Nitai <small>GN</small>	—	—	—
Jagannath Baldeva Subhadra <small>JBS</small>	—	—	—
Laxmi Narsimha <small>LN</small>	—	—	—
Sita Rama Laxmana Hanumana <small>SRLH</small>	—	—	—

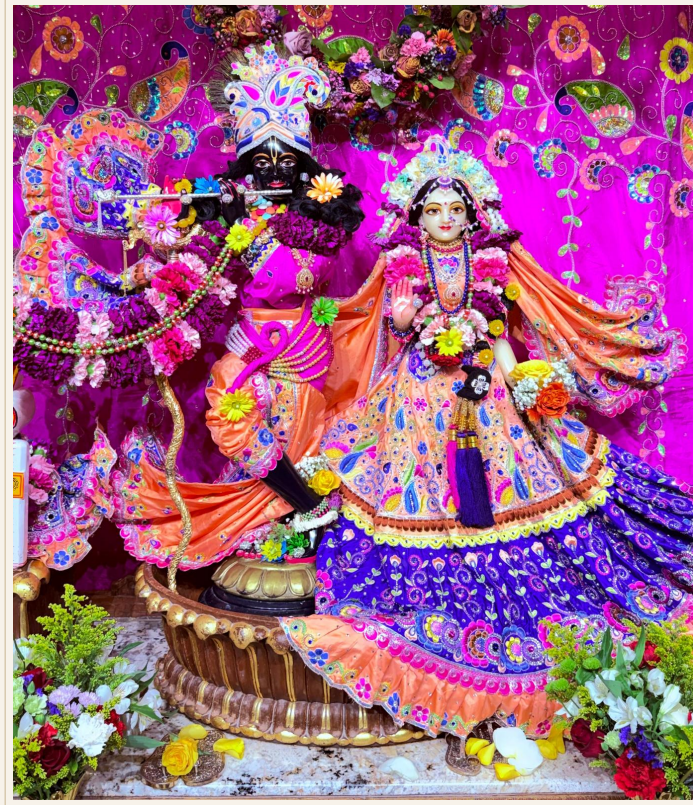
BACKGROUND

BG-WKD-006



Kadamba Pushpa

COLOUR **Magenta & Ivory**



DEITY	CROWN / TURBAN	EFFULGENCE	JEWELLERY
Radha Neela Madhava <small>RNM</small>	—	—	—
Gaur Nitai <small>GN</small>	—	—	—
Jagannath Baldeva Subhadra <small>JBS</small>	—	—	—
Laxmi Narsimha <small>LN</small>	—	—	—
Sita Rama Laxmana Hanumana <small>SRLH</small>	—	—	—

BACKGROUND

BG-WKD-007



Shyama Sundara

COLOUR **Royal Blue & Green**



DEITY	CROWN / TURBAN	EFFULGENCE	JEWELLERY
Radha Neela Madhava <small>RNM</small>	—	—	—
Gaur Nitai <small>GN</small>	—	—	—
Jagannath Baldeva Subhadra <small>JBS</small>	—	—	—
Laxmi Narsimha <small>LN</small>	—	—	—
Sita Rama Laxmana Hanumana <small>SRLH</small>	—	—	—

BACKGROUND

BG-WKD-008



Vrindavana Vilasa

COLOUR **Teal & Yellow Silk**



DEITY	CROWN / TURBAN	EFFULGENCE	JEWELLERY
Radha Neela Madhava <small>RNM</small>	—	—	—
Gaur Nitai <small>GN</small>	—	—	—
Jagannath Baldeva Subhadra <small>JBS</small>	—	—	—
Laxmi Narsimha <small>LN</small>	—	—	—
Sita Rama Laxmana Hanumana <small>SRLH</small>	—	—	—

BACKGROUND

BG-WKD-009

Weekend Dresses

Festive splendour for special days

DR-WKE-001 through DR-WKE-024

BROWSE BY RANGE

001-010

001

002

003

004

005

006

007

008

009

010

011-020

011

012

013

014

015

016

017

018

019

020

021-024

021

022

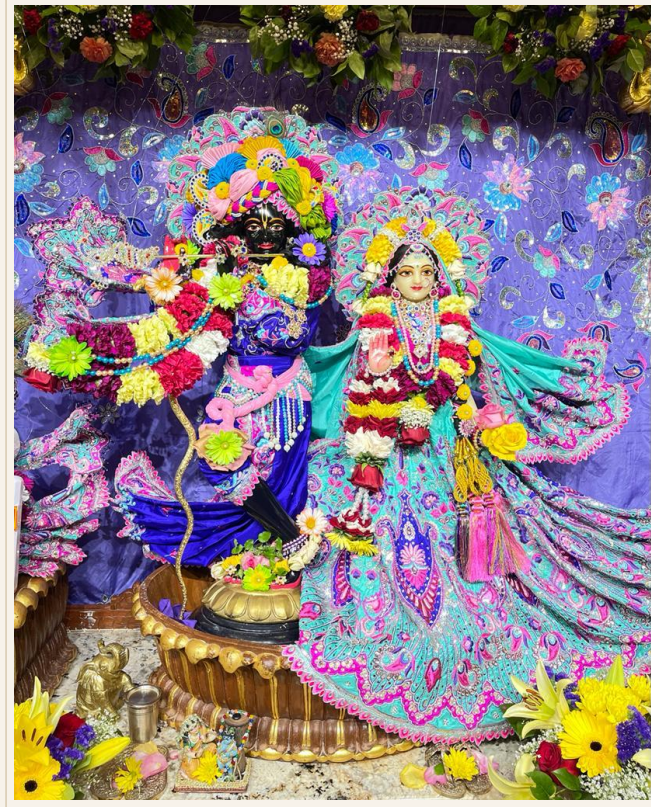
023

024



Navadwipa Priya

COLOUR **Indigo & Mint Floral**



DEITY	CROWN / TURBAN	EFFULGENCE	JEWELLERY
Radha Neela Madhava <small>RNM</small>	TRBN	—	—
Gaur Nitai <small>GN</small>	TRBN	—	—
Jagannath Baldeva Subhadra <small>JBS</small>	TRBN	—	—
Laxmi Narsimha <small>LN</small>	TRBN	—	—
Sita Rama Laxmana Hanumana <small>SRLH</small>	—	—	—

BACKGROUND

BG-WKE-001



Keshava Priya

COLOUR **Fuchsia & Gold**



DEITY	CROWN / TURBAN	EFFULGENCE	JEWELLERY
Radha Neela Madhava <small>RNM</small>	<input type="checkbox"/> TRBN	—	—
Gaur Nitai <small>GN</small>	<input type="checkbox"/> TRBN	—	—
Jagannath Baldeva Subhadra <small>JBS</small>	<input type="checkbox"/> TRBN	—	—
Laxmi Narsimha <small>LN</small>	<input type="checkbox"/> TRBN	—	—
Sita Rama Laxmana Hanumana <small>SRLH</small>	—	—	—

BACKGROUND

BG-WKE-002



Gokula Ananda

COLOUR **Salmon & Green Brocade**



DEITY	CROWN / TURBAN	EFFULGENCE	JEWELLERY
Radha Neela Madhava <small>RNM</small>	TRBN	—	—
Gaur Nitai <small>GN</small>	TRBN	—	—
Jagannath Baldeva Subhadra <small>JBS</small>	TRBN	—	—
Laxmi Narsimha <small>LN</small>	TRBN	—	—
Sita Rama Laxmana Hanumana <small>SRLH</small>	—	—	—

BACKGROUND

BG-WKE-003



Surya Prakasha

COLOUR Orange & Black Zari



DEITY	CROWN / TURBAN	EFFULGENCE	JEWELLERY
Radha Neela Madhava <small>RNM</small>	TRBN	—	—
Gaur Nitai <small>GN</small>	TRBN	—	—
Jagannath Baldeva Subhadra <small>JBS</small>	TRBN	—	—
Laxmi Narsimha <small>LN</small>	TRBN	—	—
Sita Rama Laxmana Hanumana <small>SRLH</small>	—	—	—

BACKGROUND

BG-WKE-004



Tamal Taru

COLOUR Red & White Chikankari



DEITY	CROWN / TURBAN	EFFULGENCE	JEWELLERY
Radha Neela Madhava <small>RNM</small>	TRBN	—	—
Gaur Nitai <small>GN</small>	TRBN	—	—
Jagannath Baldeva Subhadra <small>JBS</small>	TRBN	—	—
Laxmi Narsimha <small>LN</small>	TRBN	—	—
Sita Rama Laxmana Hanumana <small>SRLH</small>	—	—	—

BACKGROUND

BG-WKE-005



Yamuna Tira

COLOUR **Indigo & Multicolour**



DEITY	CROWN / TURBAN	EFFULGENCE	JEWELLERY
Radha Neela Madhava <small>RNM</small>	TRBN	—	—
Gaur Nitai <small>GN</small>	TRBN	—	—
Jagannath Baldeva Subhadra <small>JBS</small>	TRBN	—	—
Laxmi Narsimha <small>LN</small>	TRBN	—	—
Sita Rama Laxmana Hanumana <small>SRLH</small>	—	—	—

BACKGROUND

BG-WKE-006



Mayura Nritya

COLOUR **Black & Multicolour Floral**



DEITY	CROWN / TURBAN	EFFULGENCE	JEWELLERY
Radha Neela Madhava <small>RNM</small>	<input type="checkbox"/> TRBN	—	—
Gaur Nitai <small>GN</small>	<input type="checkbox"/> TRBN	—	—
Jagannath Baldeva Subhadra <small>JBS</small>	<input type="checkbox"/> TRBN	—	—
Laxmi Narsimha <small>LN</small>	<input type="checkbox"/> TRBN	—	—
Sita Rama Laxmana Hanumana <small>SRLH</small>	—	—	—

BACKGROUND

BG-WKE-007



Kusum Mala

COLOUR **Pink & Green Garden**



DEITY	CROWN / TURBAN	EFFULGENCE	JEWELLERY
Radha Neela Madhava <small>RNM</small>	TRBN	—	—
Gaur Nitai <small>GN</small>	TRBN	—	—
Jagannath Baldeva Subhadra <small>JBS</small>	TRBN	—	—
Laxmi Narsimha <small>LN</small>	TRBN	—	—
Sita Rama Laxmana Hanumana <small>SRLH</small>	—	—	—

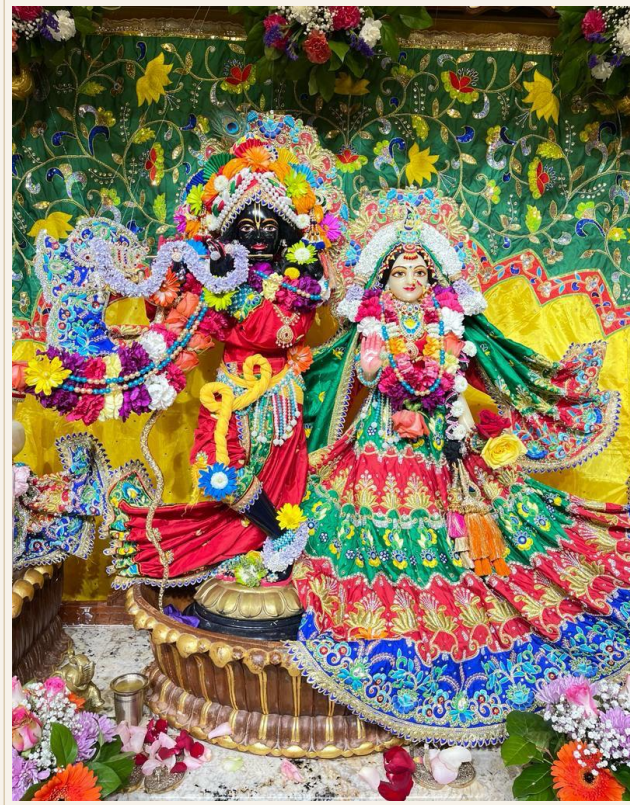
BACKGROUND

BG-WKE-008



Harita Vana

COLOUR **Green & Multicolour Forest**



DEITY	CROWN / TURBAN	EFFULGENCE	JEWELLERY
Radha Neela Madhava <small>RNM</small>	TRBN	—	—
Gaur Nitai <small>GN</small>	TRBN	—	—
Jagannath Baldeva Subhadra <small>JBS</small>	TRBN	—	—
Laxmi Narsimha <small>LN</small>	TRBN	—	—
Sita Rama Laxmana Hanumana <small>SRLH</small>	—	—	—

BACKGROUND

BG-WKE-009



Nilambara

COLOUR **Royal Blue & Gold Zari**



DEITY	CROWN / TURBAN	EFFULGENCE	JEWELLERY
Radha Neela Madhava <small>RNM</small>	TRBN	—	—
Gaur Nitai <small>GN</small>	TRBN	—	—
Jagannath Baldeva Subhadra <small>JBS</small>	TRBN	—	—
Laxmi Narsimha <small>LN</small>	TRBN	—	—
Sita Rama Laxmana Hanumana <small>SRLH</small>	—	—	—

BACKGROUND

BG-WKE-010



Kadamba Vana

COLOUR Yellow & Purple Brocade



DEITY	CROWN / TURBAN	EFFULGENCE	JEWELLERY
Radha Neela Madhava <small>RNM</small>	TRBN	—	—
Gaur Nitai <small>GN</small>	TRBN	—	—
Jagannath Baldeva Subhadra <small>JBS</small>	TRBN	—	—
Laxmi Narsimha <small>LN</small>	TRBN	—	—
Sita Rama Laxmana Hanumana <small>SRLH</small>	—	—	—

BACKGROUND

BG-WKE-011



Maha Lakshmi

COLOUR **Crimson & Gold Heavy**



DEITY	CROWN / TURBAN	EFFULGENCE	JEWELLERY
Radha Neela Madhava <small>RNM</small>	TRBN	—	—
Gaur Nitai <small>GN</small>	TRBN	—	—
Jagannath Baldeva Subhadra <small>JBS</small>	TRBN	—	—
Laxmi Narsimha <small>LN</small>	TRBN	—	—
Sita Rama Laxmana Hanumana <small>SRLH</small>	—	—	—

BACKGROUND

BG-WKE-012



Pushpa Vrishti

COLOUR **Blue & Orange** Festive



DEITY	CROWN / TURBAN	EFFULGENCE	JEWELLERY
Radha Neela Madhava <small>RNM</small>	TRBN	—	—
Gaur Nitai <small>GN</small>	TRBN	—	—
Jagannath Baldeva Subhadra <small>JBS</small>	TRBN	—	—
Laxmi Narsimha <small>LN</small>	TRBN	—	—
Sita Rama Laxmana Hanumana <small>SRLH</small>	—	—	—

BACKGROUND

BG-WKE-013



Kalindi Priya

COLOUR **Blue & Multicolour Silk**



DEITY	CROWN / TURBAN	EFFULGENCE	JEWELLERY
Radha Neela Madhava <small>RNM</small>	TRBN	—	—
Gaur Nitai <small>GN</small>	TRBN	—	—
Jagannath Baldeva Subhadra <small>JBS</small>	TRBN	—	—
Laxmi Narsimha <small>LN</small>	TRBN	—	—
Sita Rama Laxmana Hanumana <small>SRLH</small>	—	—	—

BACKGROUND

BG-WKE-014



Padmavati

COLOUR Purple & Fuchsia Festival



DEITY	CROWN / TURBAN	EFFULGENCE	JEWELLERY
Radha Neela Madhava <small>RNM</small>	TRBN	—	—
Gaur Nitai <small>GN</small>	TRBN	—	—
Jagannath Baldeva Subhadra <small>JBS</small>	TRBN	—	—
Laxmi Narsimha <small>LN</small>	TRBN	—	—
Sita Rama Laxmana Hanumana <small>SRLH</small>	—	—	—

BACKGROUND

BG-WKE-015



Tulasi Devi

COLOUR **Teal & Gold Brocade**



DEITY	CROWN / TURBAN	EFFULGENCE	JEWELLERY
Radha Neela Madhava <small>RNM</small>	TRBN	—	—
Gaur Nitai <small>GN</small>	TRBN	—	—
Jagannath Baldeva Subhadra <small>JBS</small>	TRBN	—	—
Laxmi Narsimha <small>LN</small>	TRBN	—	—
Sita Rama Laxmana Hanumana <small>SRLH</small>	—	—	—

BACKGROUND

BG-WKE-016



Vrindavana Dasi

COLOUR **Crimson & Ivory Embroidery**



DEITY	CROWN / TURBAN	EFFULGENCE	JEWELLERY
Radha Neela Madhava <small>RNM</small>	TRBN	—	—
Gaur Nitai <small>GN</small>	TRBN	—	—
Jagannath Baldeva Subhadra <small>JBS</small>	TRBN	—	—
Laxmi Narsimha <small>LN</small>	TRBN	—	—
Sita Rama Laxmana Hanumana <small>SRLH</small>	—	—	—

BACKGROUND

BG-WKE-017



Radha Priya

COLOUR **Blue & Fuchsia Silk**



DEITY	CROWN / TURBAN	EFFULGENCE	JEWELLERY
Radha Neela Madhava <small>RNM</small>	TRBN	—	—
Gaur Nitai <small>GN</small>	TRBN	—	—
Jagannath Baldeva Subhadra <small>JBS</small>	TRBN	—	—
Laxmi Narsimha <small>LN</small>	TRBN	—	—
Sita Rama Laxmana Hanumana <small>SRLH</small>	—	—	—

BACKGROUND

BG-WKE-018



Nava Yuva

COLOUR **Blue & Yellow Peacock**



DEITY	CROWN / TURBAN	EFFULGENCE	JEWELLERY
Radha Neela Madhava <small>RNM</small>	TRBN	—	—
Gaur Nitai <small>GN</small>	TRBN	—	—
Jagannath Baldeva Subhadra <small>JBS</small>	TRBN	—	—
Laxmi Narsimha <small>LN</small>	TRBN	—	—
Sita Rama Laxmana Hanumana <small>SRLH</small>	—	—	—

BACKGROUND

BG-WKE-019



Hemangini

COLOUR **Magenta & Gold Heavy**



DEITY	CROWN / TURBAN	EFFULGENCE	JEWELLERY
Radha Neela Madhava <small>RNM</small>	TRBN	—	—
Gaur Nitai <small>GN</small>	TRBN	—	—
Jagannath Baldeva Subhadra <small>JBS</small>	TRBN	—	—
Laxmi Narsimha <small>LN</small>	TRBN	—	—
Sita Rama Laxmana Hanumana <small>SRLH</small>	—	—	—

BACKGROUND

BG-WKE-020



Syamala

COLOUR **Blue & Multicolour Spring**



DEITY	CROWN / TURBAN	EFFULGENCE	JEWELLERY
Radha Neela Madhava <small>RNM</small>	TRBN	—	—
Gaur Nitai <small>GN</small>	TRBN	—	—
Jagannath Baldeva Subhadra <small>JBS</small>	TRBN	—	—
Laxmi Narsimha <small>LN</small>	TRBN	—	—
Sita Rama Laxmana Hanumana <small>SRLH</small>	—	—	—

BACKGROUND

BG-WKE-021



Krsna Priya

COLOUR **Magenta & Green Zari**



DEITY	CROWN / TURBAN	EFFULGENCE	JEWELLERY
Radha Neela Madhava <small>RNM</small>	TRBN	—	—
Gaur Nitai <small>GN</small>	TRBN	—	—
Jagannath Baldeva Subhadra <small>JBS</small>	TRBN	—	—
Laxmi Narsimha <small>LN</small>	TRBN	—	—
Sita Rama Laxmana Hanumana <small>SRLH</small>	—	—	—

BACKGROUND

BG-WKE-022



Lalita Sakhi

COLOUR **Teal & Multicolour Festive**



DEITY	CROWN / TURBAN	EFFULGENCE	JEWELLERY
Radha Neela Madhava <small>RNM</small>	TRBN	—	—
Gaur Nitai <small>GN</small>	TRBN	—	—
Jagannath Baldeva Subhadra <small>JBS</small>	TRBN	—	—
Laxmi Narsimha <small>LN</small>	TRBN	—	—
Sita Rama Laxmana Hanumana <small>SRLH</small>	—	—	—

BACKGROUND

BG-WKE-023



Visakha Devi

COLOUR **Black & Gold Embroidery**



DEITY	CROWN / TURBAN	EFFULGENCE	JEWELLERY
Radha Neela Madhava <small>RNM</small>	TRBN	—	—
Gaur Nitai <small>GN</small>	TRBN	—	—
Jagannath Baldeva Subhadra <small>JBS</small>	TRBN	—	—
Laxmi Narsimha <small>LN</small>	TRBN	—	—
Sita Rama Laxmana Hanumana <small>SRLH</small>	—	—	—

BACKGROUND

BG-WKE-024

Ekadashi Weekday

Pure and auspicious for Ekadashi

DR-EKW-001 through DR-EKW-002

BROWSE BY RANGE

001-002

001

002



Shuddha Vasana

COLOUR **White & Pink Chikankari**



DEITY	CROWN / TURBAN	EFFULGENCE	JEWELLERY
Radha Neela Madhava <small>RNM</small>	TRBN	—	—
Gaur Nitai <small>GN</small>	TRBN	—	—
Jagannath Baldeva Subhadra <small>JBS</small>	TRBN	—	—
Laxmi Narsimha <small>LN</small>	TRBN	—	—
Sita Rama Laxmana Hanumana <small>SRLH</small>	—	—	—

BACKGROUND

BG-EKW-001



Ekadashi Pushpa

COLOUR **White & Red Bridal**



DEITY	CROWN / TURBAN	EFFULGENCE	JEWELLERY
Radha Neela Madhava <small>RNM</small>	TRBN	—	—
Gaur Nitai <small>GN</small>	TRBN	—	—
Jagannath Baldeva Subhadra <small>JBS</small>	TRBN	—	—
Laxmi Narsimha <small>LN</small>	TRBN	—	—
Sita Rama Laxmana Hanumana <small>SRLH</small>	—	—	—

BACKGROUND

BG-EKW-002

Ekadashi Weekend

Elevated simplicity for sacred days

DR-EKE-001 through DR-EKE-003

BROWSE BY RANGE

001-003

001

002

003



Pavitra Mala

COLOUR **Pink & Teal Silk**



DEITY	CROWN / TURBAN	EFFULGENCE	JEWELLERY
Radha Neela Madhava <small>RNM</small>	TRBN	—	—
Gaur Nitai <small>GN</small>	TRBN	—	—
Jagannath Baldeva Subhadra <small>JBS</small>	TRBN	—	—
Laxmi Narsimha <small>LN</small>	TRBN	—	—
Sita Rama Laxmana Hanumana <small>SRLH</small>	—	—	—

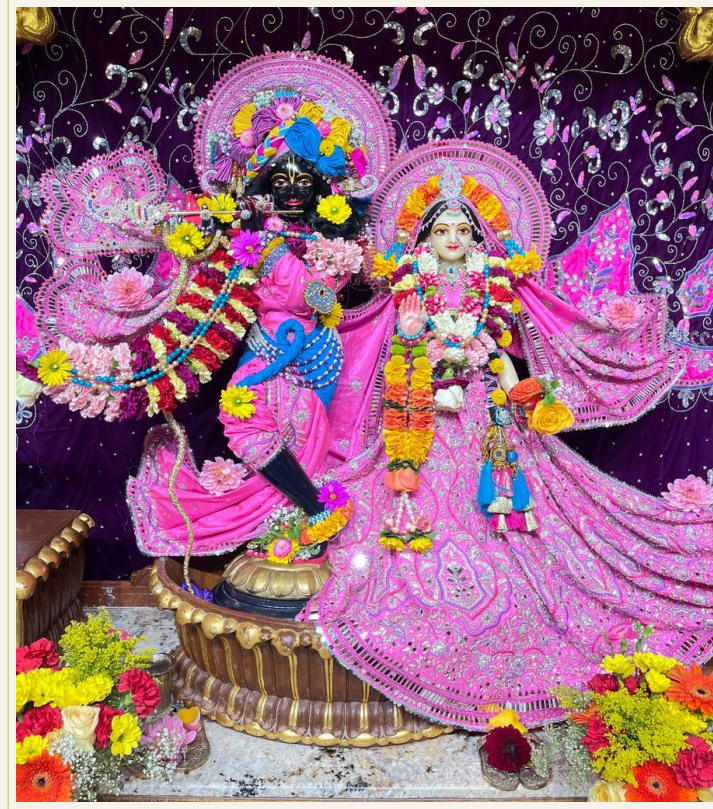
BACKGROUND

BG-EKE-001



Vrata Shobha

COLOUR **Fuchsia & Purple Brocade**



DEITY	CROWN / TURBAN	EFFULGENCE	JEWELLERY
Radha Neela Madhava <small>RNM</small>	TRBN	—	—
Gaur Nitai <small>GN</small>	TRBN	—	—
Jagannath Baldeva Subhadra <small>JBS</small>	TRBN	—	—
Laxmi Narsimha <small>LN</small>	TRBN	—	—
Sita Rama Laxmana Hanumana <small>SRLH</small>	—	—	—

BACKGROUND

BG-EKE-002



Nishkalanka

COLOUR **Crimson & Pink Festive**



DEITY	CROWN / TURBAN	EFFULGENCE	JEWELLERY
Radha Neela Madhava <small>RNM</small>	TRBN	—	—
Gaur Nitai <small>GN</small>	TRBN	—	—
Jagannath Baldeva Subhadra <small>JBS</small>	TRBN	—	—
Laxmi Narsimha <small>LN</small>	TRBN	—	—
Sita Rama Laxmana Hanumana <small>SRLH</small>	—	—	—

BACKGROUND

BG-EKE-003

Colour Index

Browse by colour name. Tap any code to jump to that dress page.

Black and Gold

[DR-WKE-007](#)

[DR-WKE-024](#)

Black and Multicolour

[DR-WKE-007](#)

Blue and Fuchsia

[DR-WKE-018](#)

Blue and Gold

[DR-WKE-010](#)

Blue and Multicolour

[DR-WKE-014](#)

[DR-WKE-021](#)

Blue and Orange

[DR-WKE-013](#)

Blue and Yellow

[DR-WKE-019](#)

Crimson and Gold

[DR-WKD-003](#)

[DR-WKE-012](#)

Crimson and Ivory

[DR-WKE-017](#)

Crimson and Pink

[DR-EKE-003](#)

Fuchsia and Gold

[DR-WKE-002](#)

Fuchsia and Purple

[DR-EKE-002](#)

Green and Multicolour

[DR-WKE-009](#)

Indigo and Mint DR-WKE-001

Indigo and Multicolour DR-WKE-006

Magenta and Gold DR-WKD-001 DR-WKE-020

Magenta and Green DR-WKE-022

Magenta and Ivory DR-WKD-007

Orange and Black DR-WKE-004

Peach and Copper DR-WKD-006

Pink and Green DR-WKE-008

Pink and Teal DR-EKE-001

Purple and Fuchsia DR-WKE-015

Purple and Orange DR-WKD-002

Purple and Saffron DR-WKD-005

Red and White DR-WKE-005

Rose and Lime DR-WKD-004

Royal Blue and Gold DR-WKE-010

Royal Blue and Green

DR-WKD-008

Salmon and Green

DR-WKE-003

Teal and Gold

DR-WKE-016

Teal and Multicolour

DR-WKE-023

Teal and Yellow

DR-WKD-009

White and Pink

DR-EKW-001

White and Red

DR-EKW-002

Yellow and Purple

DR-WKE-011

How to Use This Catalog

Categories	Each section opens with a warm parchment divider page.
Range Index	Tap any number tile on the divider page to jump directly to that dress.
Dress Code	Coloured badge at top-right of every page. The colour shows the occasion.
Ornament Table	Below each photo: shows Crown/Turban, Effulgence and Jewellery codes per deity.
Background	The accessory panel at the bottom of each page shows the background code.
Colour Index	Find dresses by colour at the back of the catalog. Tap any code to jump there.
Code System	See the Code Reference page for the full pattern guide.



All codes are for internal reference only.